

HPLC TEST RESULT

IGF-1 LR3

Test Method:

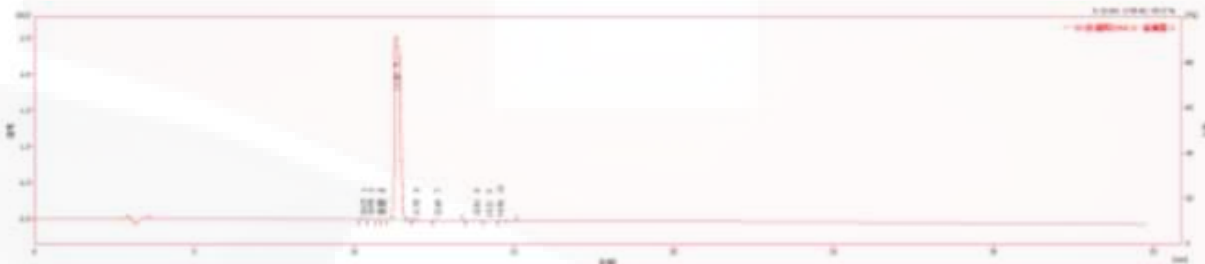
Date: 4/10/21

Column : C18 4. 6*250mm, 5um
 Solvent B : 100% Acetonitrile
 Solvent A : 0.1% Trifluoroacetic in 100% Water
 Gradient :

	B	A
0.0min	25%	75%
30.0min	55%	45%

 Flow Rate : 1.0ml/min
 Wave Length : 220nm
 Temperature : 37°C
 Concentration : 0.5mg/ml
 Sample Volume : 20ul

= Auto-Scaled Chromatogram:



= Result:

	RT [min]	ST [min]	ET [min]	Area [mAU.s]	Area [%]
1	10.269	10.138	10.389	41.197	0.1
2	10.495	10.389	10.684	50.316	0.1
3	10.781	10.684	10.834	11.411	0.0
4	10.905	10.834	10.998	18.785	0.1
5	11.295	10.998	11.794	33238.385	98.7
6	11.923	11.794	12.424	115.446	0.3
7	12.597	12.424	13.362	53.574	0.2
8	13.813	13.495	14.014	96.276	0.3
9	14.208	14.014	14.487	40.895	0.1
10	14.563	14.487	15.056	11.907	0.0
	Total			33678.192	100.0