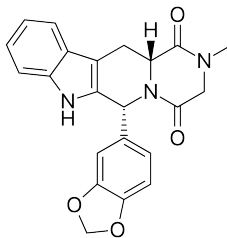


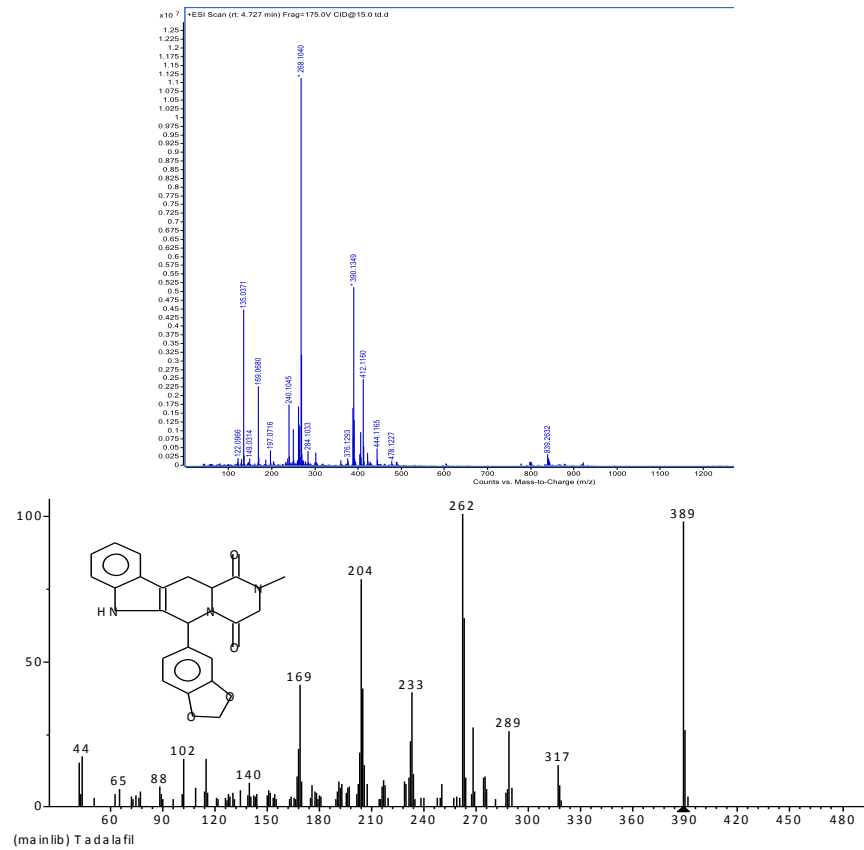
# TADALAFIL

- **Sample name:** Sample Tadalafil capsule
- **Sampling Date:** 10/30/2020
- **Report Date:** 11/03/2020
- **Analysis equipment:** LCMS; GCMS

Analysis of Object	Description	Specification	Potency	Method
Potency/purity assay	acpsules	20 mg/cap	21.6 mg/cap	HPLC-UV/MS & GCMS-FID
Identification of active ingredients	<b>Tadalafil</b>			



Tadalafil (C<sub>22</sub>H<sub>19</sub>N<sub>3</sub>O<sub>4</sub> : MW: 389.2; m/z [M+H]: 390.1349)



**Fig.1.** MS spectrum and Chromatography by LCMS and GCMS