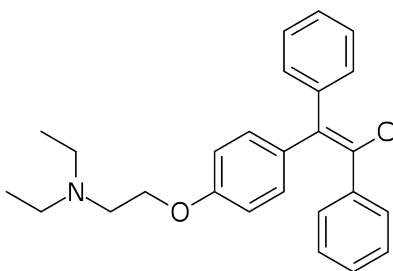
	ANALYTICAL TESTING REPORT	Page 1 of 1
	<h1>Clomiphene</h1>	

- **Sample name:** Sample Clomiphene tablets
- **Sampling Date:** 01/13/2020
- **Report Date:** 01/14/2020
- **Analysis equipment:** LCMS; GCMS

Analysis of Object	Description	Specification	Potency*	Method
Potency/purity assay	Red tablets	25 mg/ml	25.02 mg/mL	HPLC-UV/MS GCMS-FID
Identification of active ingredients	Clomiphene			



Clomiphene structure (C₂₆H₂₈ClNO; MW: 405.62)