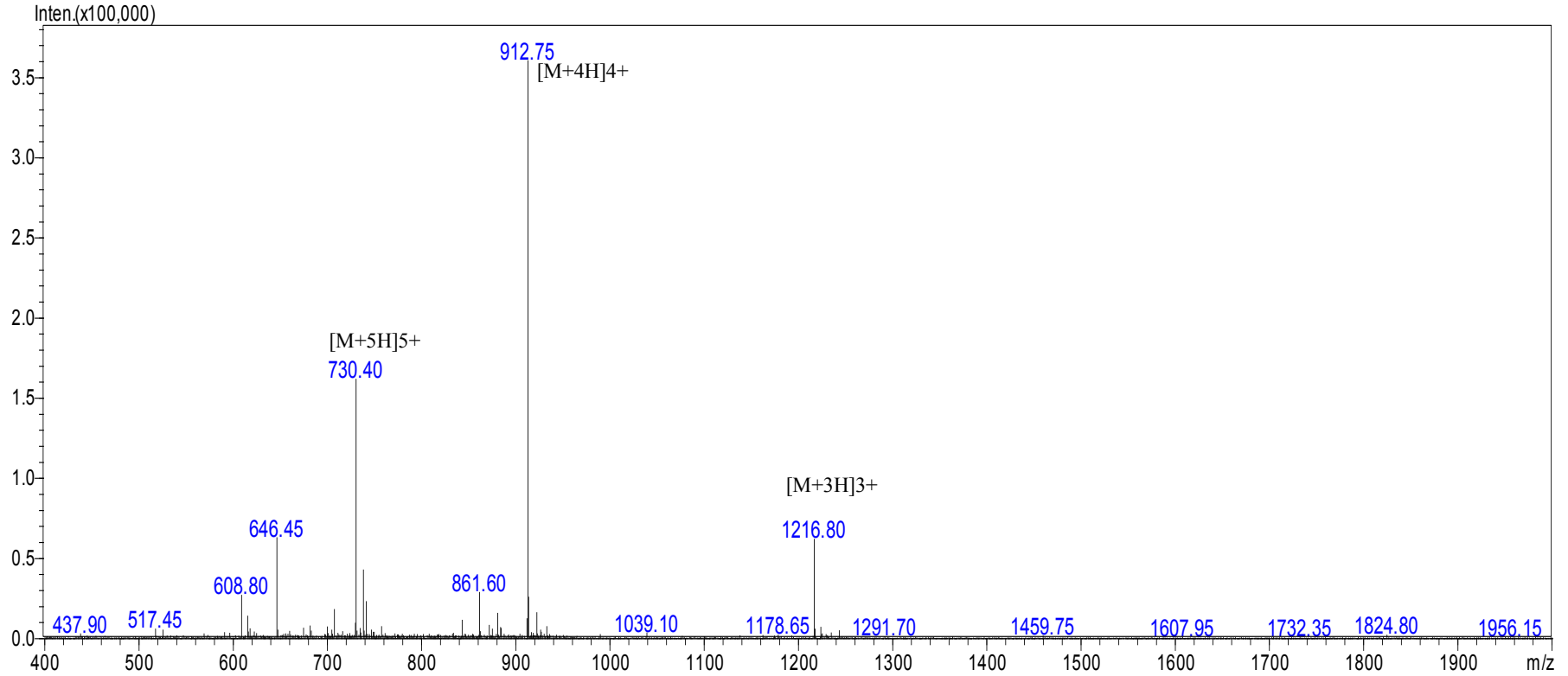


REPORT

Sequence :

:



Date and Time: 2019-11-25 15:43:44  
Sample : CJC-1295 DAC  
MW : 3647.15  
Lot No. : P191025-LR087292

Probe: ESI  
Nebulizer Gas Flow: 1.5L/min  
CDL: -20.0v  
CDL Temp: 250°C  
Block Temp: 200°C

Probe bias: +4.5kv  
Detector: 1.5kv  
T. Flow: 0.2ml/min  
B. conc: 50%H2O/50%ACN